

YOU OR A LOVED ONE



North American Distributor:
Avi Federgreen
IndieCan Entertainment Inc.
info@indiecanent.com
416-898-3456

Producer:
Matt Mercer
Rubric Pictures
rubricpictures@gmail.com
917-664-2545

Producer:
Chris Bouffard
Chris Bouffard Productions
bouffardchris@yahoo.com
213-792-4747



SUMMARY

Reeling from withdrawal effects after a pharmaceutical drug trial, a reclusive aspiring illustrator sets out to form a relationship with an outgoing gal despite his continuous efforts at solitude and isolation in director Matt Mercer's quirky relationship comedy. Parker (Chris Bouffard) is uncertain if he suffers from anxiety, but as the medication leaves his system he can barely perform daily tasks. His insistent neighbor Sean (Charley Koontz) manages to summon him from seclusion, thrusting Parker back into the fearsome outside world of Los Angeles.

Overwhelmed by the awkward realities of interacting with the opposite sex in his altered state, Parker retreats back into his isolated world, until his level-headed best bud Ralph (Mercer), and Ralph's loving girlfriend (Celia Finkelstein), counteract his exile by introducing him to an eccentric friend, Teresa (Katie Wallack), with whom they consider him to be a match-fit. As he attempts to distance himself from the anxiety medication by gravitating closer to the seemingly stable Teresa, Parker learns that appearances and relationships are not always what they seem.

DIRECTOR'S STATEMENT

The opportunity to make *You or a Loved One* came unexpectedly, but at exactly the right time.

I was sort of at a crossroads. I had been working as an actor for years in stage productions, films, and commercials. I found myself wanting to grasp more behind-the-camera. I also wanted to reconnect with the childhood movie nut who used to make mini-epics with his family camcorder in which no best friend or toy was left un-eviscerated.

I really just wanted to see if I could tell stories in this medium like I so desired as a kid. A fear of failure was keeping me from it. So I started branching out a bit. I made some short content and produced a successful horror movie (*Contracted*, released by IFC), but I frankly still didn't have the confidence, and wasn't sure I was capable enough, to direct a feature film. I kept dragging my feet.

I still today wouldn't have tackled a feature if it weren't for Chris Bouffard. Chris and I used to bartend together at the same establishment in LA, and admired each other's work as actors. He'd seen a short film I'd made to pitch *Contracted*. He knew I'd been producing, and sent me the first draft of what would become *You or a Loved One*, asking if I'd be interested in directing it if he pulled together the financing. I questioned his judgment about me directing, but he was 100% sure I could and should do it. I couldn't have made the leap into feature directing without his consistent confidence in me.

In spite of it being Chris' first screenplay, I took to it immediately. It had a personal, raw vibe, and took a compellingly observational view of its characters. I could "see" it. I also didn't see a low budget or limited resources getting in the way of the "slice of life" appeal of the story. We just had to come up with a very particular paradigm to pull it off.

And we did. And I'm so proud of what we accomplished.

Our goal was to preserve that character-driven relationship dramedy that Chris had in mind (and had somewhat experienced in real life), and film it with a professional crew, a talented cast, and multiple Los Angeles locations on a diabolically tight schedule and with super-limited resources. Without our multi-talented, resourceful co-producer Jose Luis (who did more jobs on this film than I can count, and with the utmost precision), our swift, efficient, and visually canny DP Patrick McGinley, and the entire talented cast and dedicated crew, this goal couldn't have been accomplished.

Whatever people take from it, for me, *You or a Loved One* is a Los Angeles coming-of-age story, in front of and behind the camera. The experience of making it changed my life in countless ways, and for that I will be forever grateful.

Matt Mercer



CREW

WRITER / EP Chris Bouffard
DIRECTOR / PRODUCER Matt Mercer
CO-PRODUCER Jose Luis Gonzalez
DP Patrick McGinley
EDITOR Matt Mercer
SOUND Phillip Bladh, Eddie Bosnoyan,
Nicholas Little
GRIP Bryan Ricke, Denholm Rogers
PRODUCTION DESIGNER Reed Johns
KEY MAKE UP Mayera Abeita
POST SOUND D.A. Strawder, Matt Mercer
MUSIC Danna Richards
GRAPHIC DESIGN Rachel Ferrell

CAST

PARKER Chris Bouffard
TERESA Katie Wallack
SEAN Charley Koontz
RALPH Matt Mercer
SOPHIA Celia Finkelstein
SADIE Katherine Tokarz
ANDY Michael Childers
LISA Najarra Townsend
HANI Bruno Francassa
YUPPY Dave Holmes



CAST BIOS



CHRIS BOUFFARD *Writer / "Parker"*

Chris grew up in the family student apartments section on the campus of Michigan State University, where at a young age he first cut his teeth as a very serious and committed thespian, acting out the great works of the Lethal Weapon and Die Hard series' with his peers often having the campus police called to witness the levels of dedication and commitment. This led to procuring video cameras through parents and school video production departments during high school and college for the purpose of making short film sequels to popular action films. Chris studied at Improv Olympic in Hollywood. He has performed frequently in theatre around the Los Angeles area. He produced an original play at the Promenade Playhouse in Santa Monica in addition to performing in the Los Angeles Playwrights Lab at The Complex Theatre among other venues. Chris makes his living as a commercial and Voice-Over actor with over 100 national television commercials to his credit and spent the past three years as the brand voice of Ace Hardware providing voice for all television and radio commercials. *You Or A Loved One* is his first feature length film as a writer.



KATIE WALLACK *"Teresa"*

Katie came into film through the theatre and she came into theatre through gymnastics. She was a gymnast for 10 years until she hurt her back when she was 15. Her school's drama teacher cast her in a couple of musicals as a dancer. She loved performing so much that when she went to college she began acting, a decision, which lead her to New York City. Among her NYC TV and Film credits, Katie wrote and performed in two original plays that were produced Off-off and to the left of Broadway. After four years of acting in New York City, Katie moved to Los Angeles. She hit the ground running in LA with several national commercials including Dish Network and Chevrolet. She has since appeared in the films *My Normal*, the Oscar-winning film *The Artist*, *Like Crazy*, *Nesting*, *The Kitchen*, and *The Frozen Ground* (with Nicholas Cage, John Cusack, and Vanessa Hudgens). She has also appeared on the TV shows *Wilfred* (FX) and *Friends with Benefits* (NBC).



CHARLEY KOONTZ “Sean”

Born and raised in Concord, California, Charley Koontz graduated from De La Salle High School in 2005. He went on to earn a Bachelor's Degree in Theatre Arts from Loyola Marymount University in Los Angeles, CA in 2009. Koontz is best known for his work as 'Fat Neil' on the NBC sitcom *Community*. Charley's other television credits include *Perfect Couples* (NBC), *Awake* (NBC) and a recurring role on the USA Networks' *Royal Pains*. He is part of the Los Angeles-based Shakespeare theatre company Will and Company. His first film, *Rubber*, directed by Quentin Dupieux, premiered at the 2010 Cannes Film Festival and has garnered an enthusiastic and dedicated cult following. He worked with Dupieux again on the 2011 film *Wrong*. His film credits also include 2013's *Contracted* and the prison-set paranormal thriller *Apparitional*. He now appears as FBI Agent Daniel Grummitz in the *CSI: Crime Scene Investigation* spin-off, *CSI: Cyber*.



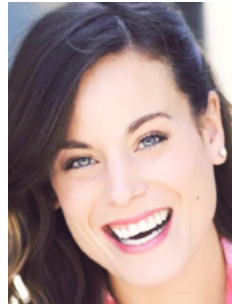
MATT MERCER Director / “Ralph”

Matt honed his skills on stages at the University of North Carolina and in New York City before turning his attention to film. His first film was the lead in the independent feature *Among Brothers*, an award-winning festival hit that reignited a decade-old murder case (on which it was based), and prompted a two-hour televised exposé by *Dateline NBC*. Roles in other films followed, including the Lions Gate horror flick *Diary of a Serial Killer* (aka *Copycat*), the crime drama *Few Options* (with Rainn Wilson, Brad Dourif, Michael Sheen, and Kenny Johnson), the comedy *Bad Bad Men*, and the thrillers *Madison County*, *The Poisoning*, and *Kessler's Lab*, *The Mind's Eye*, and *Beyond the Gates*. Recently, Matt has added more roles to his lineup, but also stepped behind the camera on these same projects: he co-produced the feature film *Contracted* (IFC) and starred in the sequel *Contracted: Phase II*, and he directed, edited, and produced the feature film *You or a Loved One*. He currently resides in California.



CELIA FINKELSTEIN “Sophia”

Celia was dragged to her first acting class kicking and screaming at the age of 12. In the middle of her first performance, she ran offstage crying. Eventually she made it back onstage and has since performed Off-Broadway, Off-off Broadway, and in too many church basements to count. She is a graduate of Rollins College and has studied at RADA, The Shakespeare Lab at the Public Theater, and Steppenwolf West. Her television credits include guest-starring roles on *Rizzoli and Isles*, *The Mentalist*, *House M.D.*, *American Horror Story*, *Don't Trust the B* in Apartment 23*, *The Middle*, *NCIS: Los Angeles*, and *My Boys*. Her film credits include the award-winning short, *Stigma* directed by Phill Schwartz, *Contracted* directed by Eric England, *You or a Loved One* directed by Matt Mercer, and *Horrible Bosses* directed by Seth Gordon and starring Colin Farrell and Jason Sudeikis. Celia is an avid swimmer and enjoys day drinking and "that's what she said" jokes.



KATHERINE TOKARZ “Sadie”

Katherine Tokarz loves naps, cheese, and making people feel happy. Since leaving Massachusetts to work for Tokyo Disney in 2001, she has spent the last twelve years working her butt off all over the place, gratefully. On Broadway she could be seen in the original cast of *Rock of Ages*, (Constance, Justice/Regina cover), the original cast of Irving Berlin's *White Christmas* (Rhoda), *A Chorus Line* (Kristine), and *Wicked*. She also worked at the *Moulin Rouge* in Paris, with Alan Menken at his songbook concert at Lincoln Center, and participated in the Workshops and Pre-Broadway version in LA of *Leap of Faith*-an Alan Menken Musical. Katherine's TV credits include: *Mercy* (NBC), *The Tony Awards* (CBS), *Bloopers* (Syndicated), *Don't Trust the B-* (ABC), and *The Neighbors* (ABC). Look for Katherine in the upcoming Season 2 of *The Neighbors* and randomly doing pranks on *Bloopers*. Katherine owes big props to Gartner/Green Entertainment and BRS Agency.



TECHNICAL INFO

LOCATION Los Angeles, CA

RUN TIME 87 min

CAMERA Canon 7D

SOUND Stereo

LANGUAGE English

YEAR OF PRODUCTION 2014

INDIECAN ENTERTAINMENT IN ASSOCIATION WITH CHRIS BOUFFARD PRODUCTIONS & RUBRIC PICTURES PRESENTS A FILM BY MATT MERCER "YOU OR A LOVED ONE"

CHRIS BOUFFARD KATIE WALLACK CHARLEY KOONTZ MATT MERCER CELIA FINKELSTEIN KATHERINE TOKARZ

AND DAVE HOLMES MUSIC BY DANNA RICHARDS EDITED BY MATT MERCER PRODUCTION DESIGNER REED JOHNS DIRECTOR OF PHOTOGRAPHY PATRICK MCGINLEY

EXECUTIVE PRODUCER CHRIS BOUFFARD PRODUCED BY MATT MERCER CO-PRODUCED BY JOSE LUIS GONZALEZ WRITTEN BY CHRIS BOUFFARD DIRECTED BY MATT MERCER

WWW.YOALOMOVIE.COM

[FACEBOOK.COM/YOORALOVEDONE](https://www.facebook.com/youoralovedone)

[TWITTER.COM/YOORALOVEDONE](https://twitter.com/youoralovedone)



RUBRIC
PICTURES

Fiilex

